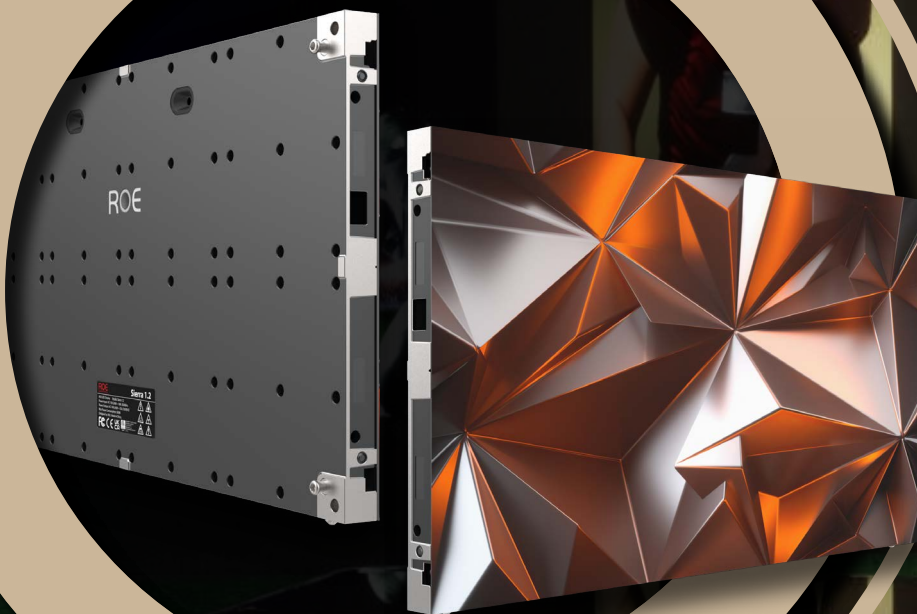


# ROE Display Solutions



## Sierra

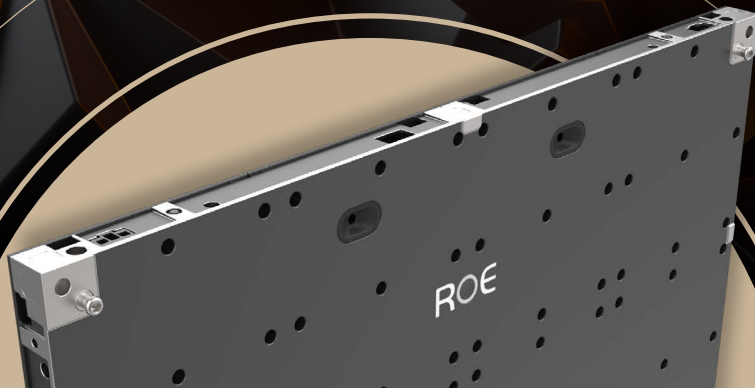
Studio-grade Performance, Everyday Efficiency

INDOOR FIXED INSTALL

# Designed for Broadcast, Built for More

ROE Visual presents the next chapter in innovative LED technology with Sierra. Fitted with flip-chip 4-in-1 LED technology, Sierra offers reduced reflection, sharp contrast, and a flawless black surface.

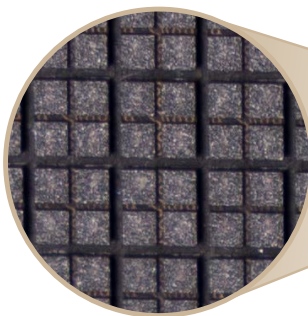
Initially engineered for the controlled conditions of broadcast studios, Sierra's advanced LED technology excels in any high-brightness setting. With superior contrast and seamless integration capabilities, it's a powerful solution for modern visual systems.



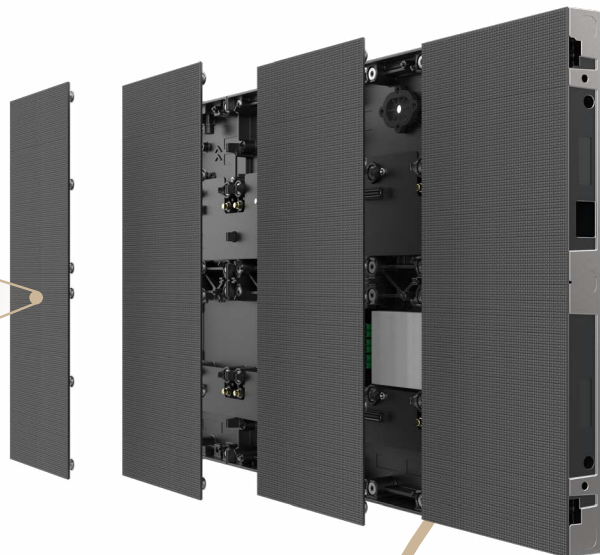
**// Low scan ratio minimizes screen flicker and reduces visible scan lines on camera, making it ideal for TV studios, broadcast stations, and other in-camera environments. //**

## Striking Contrast and In-camera Perfection

Sierra combines an optimized scan ratio with a deep black, anti-reflective surface and 4-in-1 LEDs to deliver stunning visuals for outstanding in-camera performance.



**Flip chip 4 in 1 LED**





## Energy Efficiency Redefined

Sierra leverages common cathode and flip-chip Micro LED technology, paired with a highly efficient power supply, to reduce energy consumption by up to 40%. Its consistently low operating temperatures enhance color performance and significantly extend the panel's lifespan.

**40%  
reduction**

Low profile  
panel design

16:9 ratio  
in panel design.  
Native 4K

**16:9**

Highly efficient  
power supply

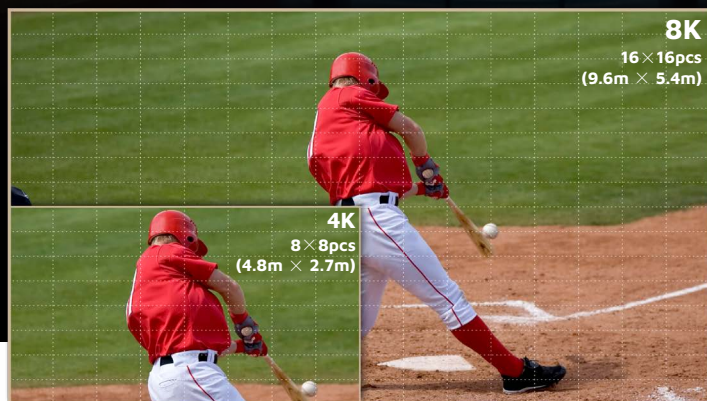
Low  
scan ratio

Front  
service

HDR  
technology

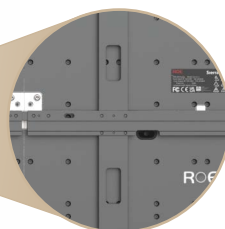
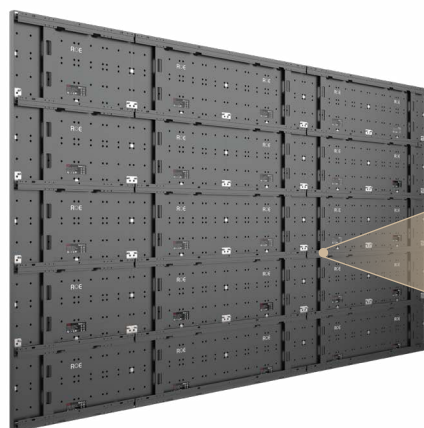
**HDR**

### Sierra 16:9 ratio



## Sleek Design Meets Precision

With a slim profile of just 55mm after installation, Sierra panels combine modern elegance with functionality. Featuring a standard 16:9 aspect ratio and dimensions of 600mm x 337.5mm, they are designed for seamless integration. The high-precision mounting frame ensures effortless installation, making them a perfect fit for any space.

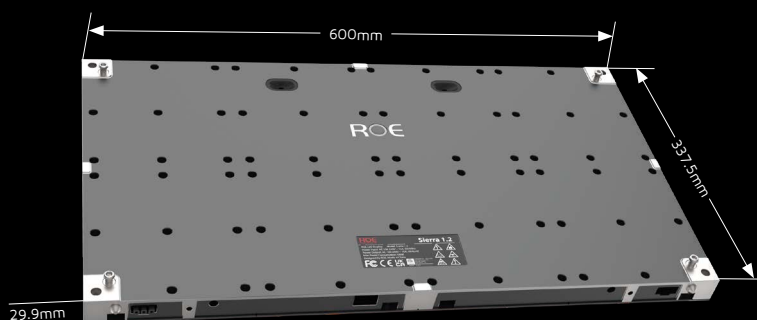


# Specifications

Sierra	Sierra 1.2	Sierra 1.5
Pixel Pitch	1.25mm	1.56mm
Max Brightness Calibrated	1000nits	1000nits
Panel Dimension	600mm x 337.5mm x 29.9mm 23.62" x 13.29" x 1.18"	600mm x 337.5mm x 29.9mm 23.62" x 13.29" x 1.18"
Panel Resolution (H x V)	480 x 270	384 x 216
Panel Weight	5.7kg; 12.57lbs	5.7kg; 12.57lbs
Power Consumption Max / Average	100W / 50W	80W / 40W
BTU Max / Average	345 / 160	275 / 130
Transparency	Solid	Solid
Serviceability	Front	Front
LED Configuration	Flip chip 4 in 1 LED	Flip chip 4 in 1 LED
Viewing Angle Horizontal	160°	160°
Viewing Angle Vertical	140°	140°
Refresh Rate	3840Hz	7680Hz
Gray Scale	15bit	16bit
Frame Material	Aluminum Alloy	Aluminum Alloy
Processing Platform	Megapixel, NovaStar	Megapixel, NovaStar
Operational Temp / Humidity	-20°~45°C, 10~90%RH -4°~113°F, 10~90%RH	-20°~45°C, 10~90%RH -4°~113°F, 10~90%RH
Storage Temp / Humidity	-40°~60°C, 10~90%RH -40°~140°F, 10~90%RH	-40°~60°C, 10~90%RH -40°~140°F, 10~90%RH
IP Rating	IP40	IP40

Notes: The specifications are for reference, actual values may vary.

## Dimensions



[www.roevisual.com](http://www.roevisual.com)

ROE China | ROE US | ROE EU | ROE UK | ROE JP | ROE ME | ROE AUS  
[roe@roevisual.com](mailto:roe@roevisual.com)